

Pipeline Coating Integrity Survey

PCM™ + Pipeline Current Mapper

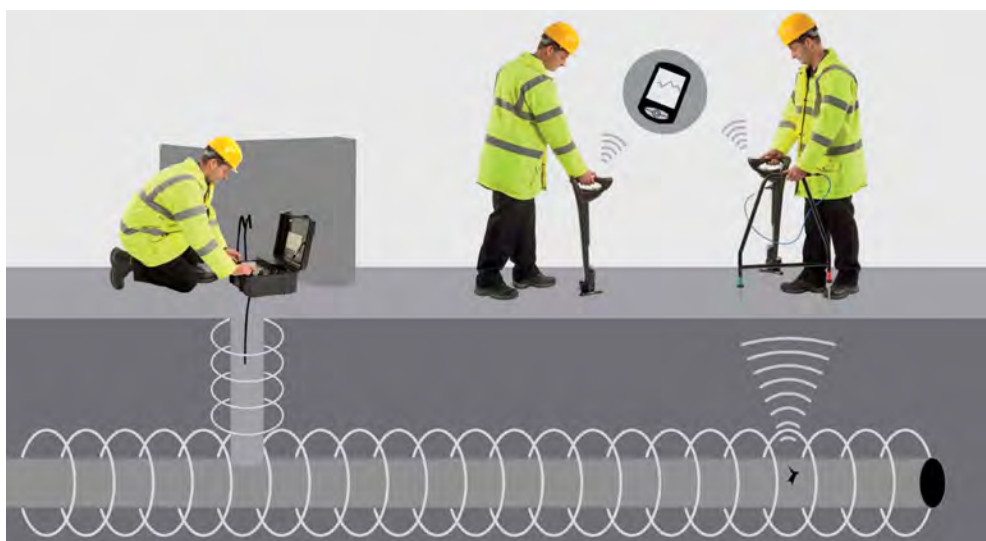
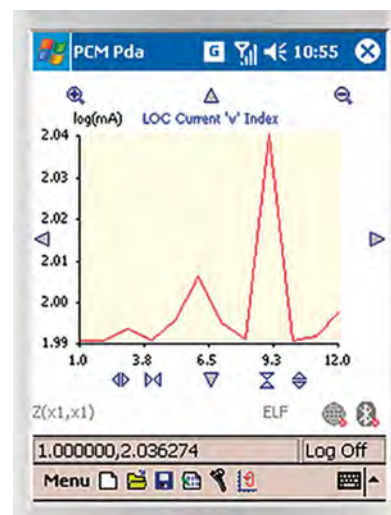
NDT Global Services offer specialist pipeline and mapping services. The Pipeline Current Mapper (PCM) determines the location and measurement of pipelines and analyses areas of corrosion using electromagnetic detection devices.

The PCM+ locator unit is used to locate the pipeline, even in heavily congested areas such as conduits, and then provides the operator with a measurement of depth current strength and signal direction applied by the transmitter to quickly pinpoint corrosion related problems.



Real time mapping analysis (PDA or PC) using Radiodetection Survey software

To provide faster analysis of mapped information, the PCM+ connects wirelessly with a PDA or PC, uploading all the information immediately and linking it with GPS into a database using the Radiodetection Survey software.



LOCATE

Accurately find buried pipes, establish centerline depth, then troubleshoot coating defects.

DATA UPLOAD

Bluetooth® link to PDA/PC for real time logging with GPS into Radiodetection Survey Application.

REVIEW

All uploaded data displayed in graphical format for immediate or post survey analysis.

A NDT Global Services Ltd, Unit 2 Opus Park, Lockheed Close, Preston Farm Industrial Estate, Stockton on Tees TS18 3BP

T 00 44 (0)1642 555575

F 00 44 (0)1642 555548

W www.ndtgsl.co.uk

E inspection@ndtgsl.co.uk